

# SUNFLEX-NEO

# SMART RUNNING TRACK SYSTEMS

HIGH-PERFORMANCE SMART ATHLETIC TRACKS | WAF-COMPLIANT







# WHO WE ARE



## Two Decades of Sports Infrastructure Excellence

Sunflex Sports Infrastructure Pvt. Ltd. is an ISO 9001:2015 certified company with 25+ years of experience in crafting world-class sports infrastructure. From wooden courts to FIFA-level football fields, we've built performance-driven play surfaces across India.

### We are:

- MSME GEM & FIEO Registered
- Expertise in indoor & outdoor sports systems: courts, turfs, athletic tracks & more
- Trusted partners for major government and private sports projects in India and abroad.
- Backed by international tech & in-house expertise and known for turnkey solutions that combine engineering, aesthetics, and athletic performance





# WHAT IS SUNFLEX NEO?

Sunflex NEO is a range of high-performance **Smart Synthetic Running Track** systems tested and certified to meet World Athletics (formerly IAAF) performance standards.

## Key Features:

- Modular system options: Spray-On, Sandwich, Full PU, PU Emboss.
- Smart Running Tracks with Built-In Athlete Performance Analytics.
- Customizable to project-specific requirements
- Suitable for various levels: schools, colleges, stadiums

# WHY CHOOSE SUNFLEX NEO?

- Certified by World Athletics for international competitions
- Durable and weather-resistant surfaces
- Innovative Smart Technology
- Low maintenance with impressive warranty
- In-house execution ensuring quality and accountability







# Certified by Global Standards

## IAAF Certification & Compliance

- Our running track systems are tested and conform to World Athletics (IAAF) performance standards.
- Certified for installation and line marking according to IAAF requirements.
- Product and track certifications involve:
  - ✓ Testing by an IAAF-approved lab
  - ✓ Certification application at IAAF Monaco
  - ✓ Track survey + in-situ product test (Class 1)
  - ✓ Track survey + product test report (Class 2)
- Certified tracks are listed on the official World Athletics website.



# Sunflex SMART Tracks

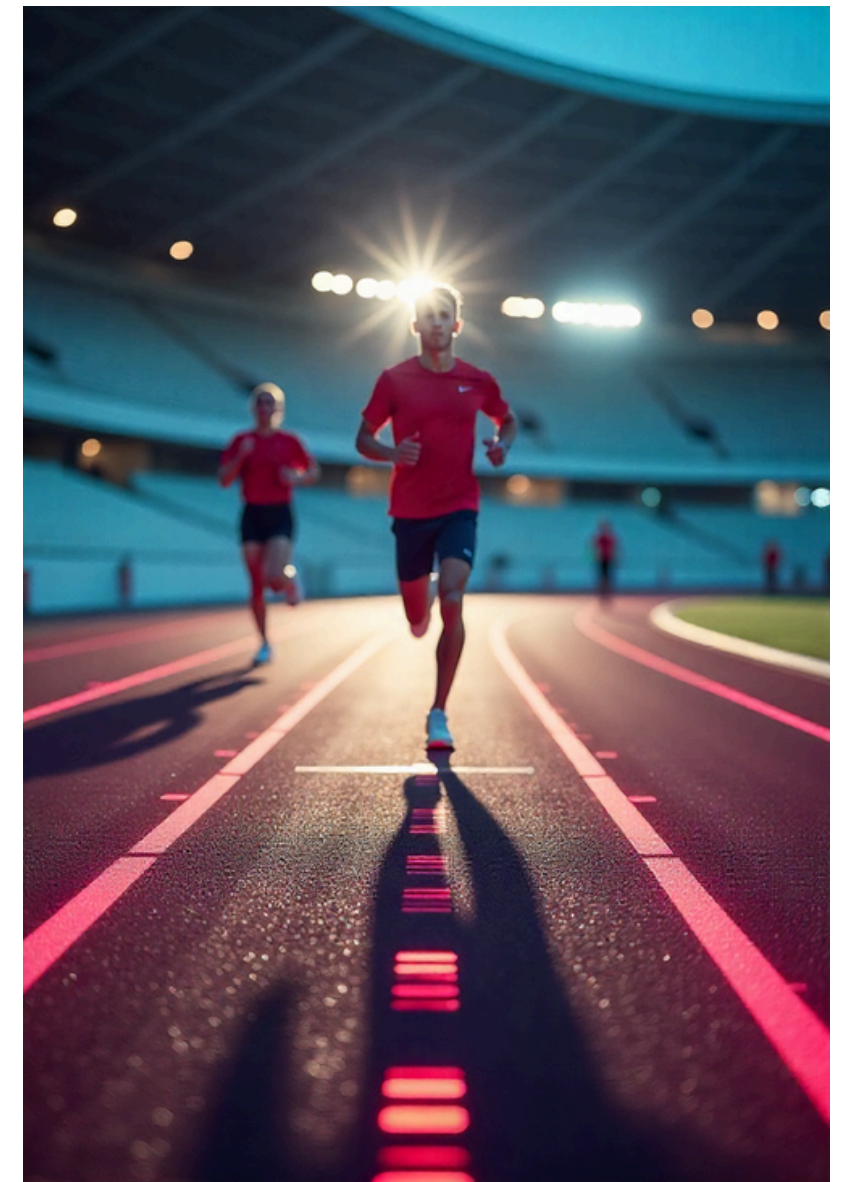
## Real-Time Data, Smarter Training, Superior Results

At **Sunflex**, we go beyond traditional tracks. Our smart running tracks offers a state-of-the-art performance diagnostics system designed for athletic tracks and sports fields. This system integrates seamlessly into the track surface, providing real-time data collection and analysis to enhance training and performance outcomes.

### Applications and Benefits

- **Athletic Training:** Coaches and athletes can utilize this data to monitor progress, identify areas for improvement, and tailor training programs to individual needs.
- **User-Friendly Interface:** The system's integration with smartphones and its intuitive app interface ensure ease of use for athletes at all levels, from amateurs to professionals.

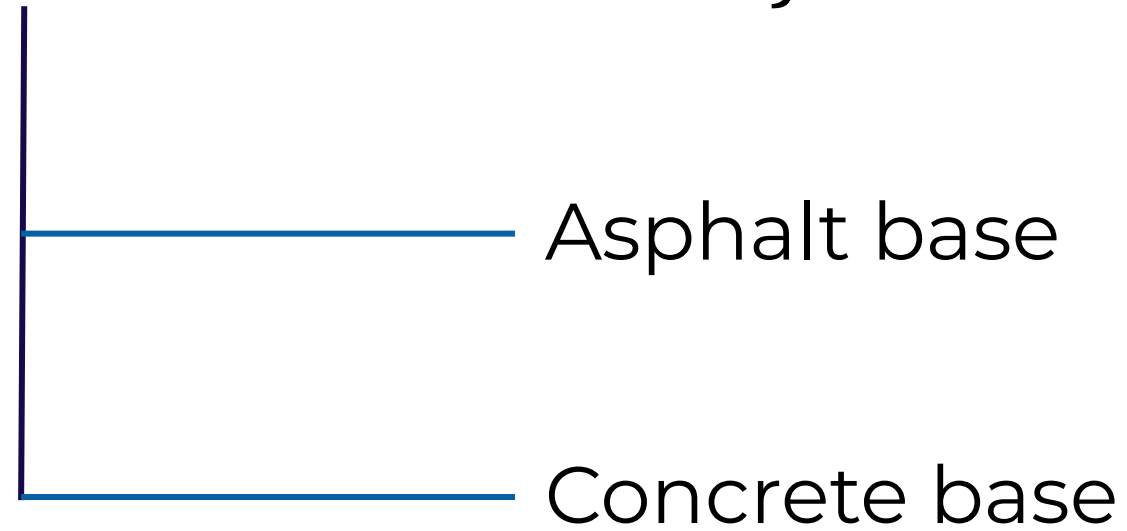
By integrating advanced performance-monitoring technology into our tracks, we empower athletes and coaches with real-time data to optimize training, enhance performance, and achieve their best results.





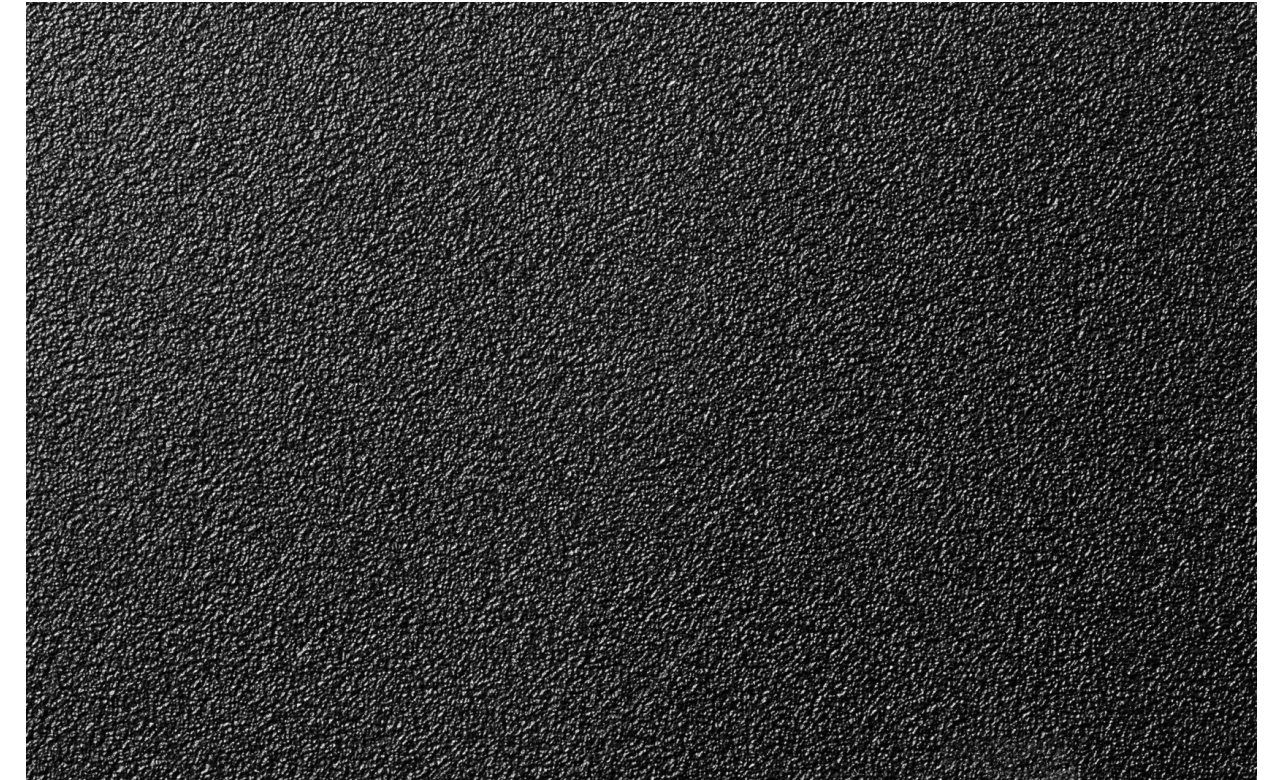
# Track Base Construction

Sunflex Smart Track systems are installed over



## Important factors for base preparation:

- Sub-grade stability
- Proper compaction using crushed stones/rocks
- Flatness tolerance of asphalt layer
- Surface drainage for water runoff
- Accurate surveying for dimensions and slope





# Track Base Construction

## Construction of Base Work





# Line Marking

Installation is done to meet IAAF line marking and dimensional tolerances





# SYSTEM OPTIONS WE OFFER

A clear breakdown to help you choose the right system based on performance, cost, and suitability.

Feature	Spray-on	Sandwich	Full PU	PU Emboss
Cost	Low	Medium	High	Moderately High
Lifespan (years)	2-3 years	5-7 years	5-10 years	10-15 years
Safety Performance	Medium	High	High	High
Warranty	2 years	3 years	5 years	5 years



# 1 Structural Spray PU System

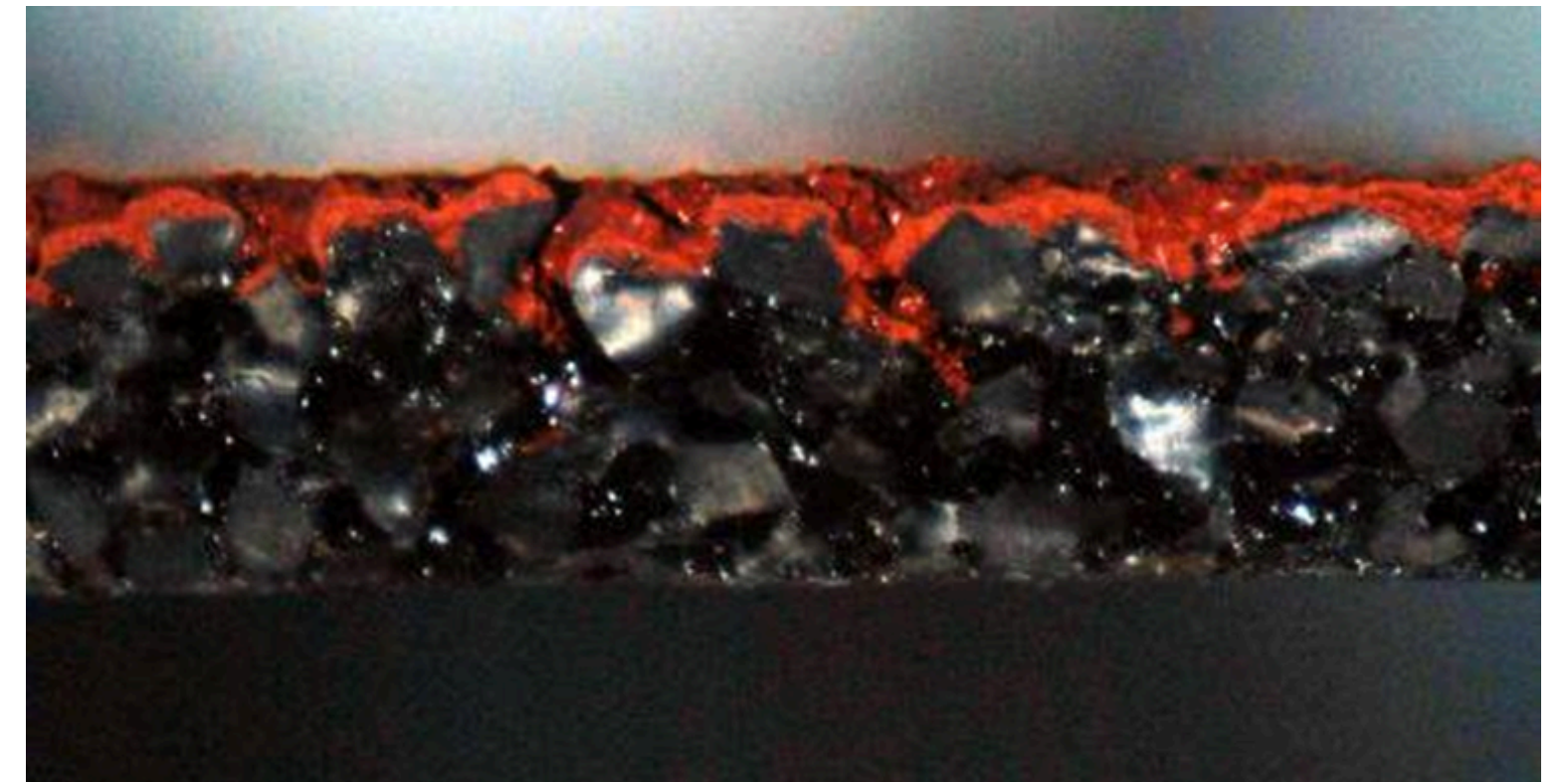
SUNFLEXINDIA.NET

**System Overview:** A dual-layer in-situ system designed for durability, economy, and compliance with IAAF standards.

## Layer Composition

*Base Elastic Layer:* Installed on-site using Ecolastic SBR granules bound with moisture-cured polyurethane binder. This layer provides elasticity and shock absorption.

*Top Structural Layer:* A spray-applied coating mixed with fine EPDM rubber granules, forming the wear-resistant, UV-stable surface.



## Key Features:

- Suitable for school and recreational tracks
- Moderate shock absorption and slip resistance
- Fast installation and low maintenance
- IAAF-compliant line marking included





# Structural Spray PU System

## SPRAY- COATING PROCEDURE





# 2 Sandwich PU System

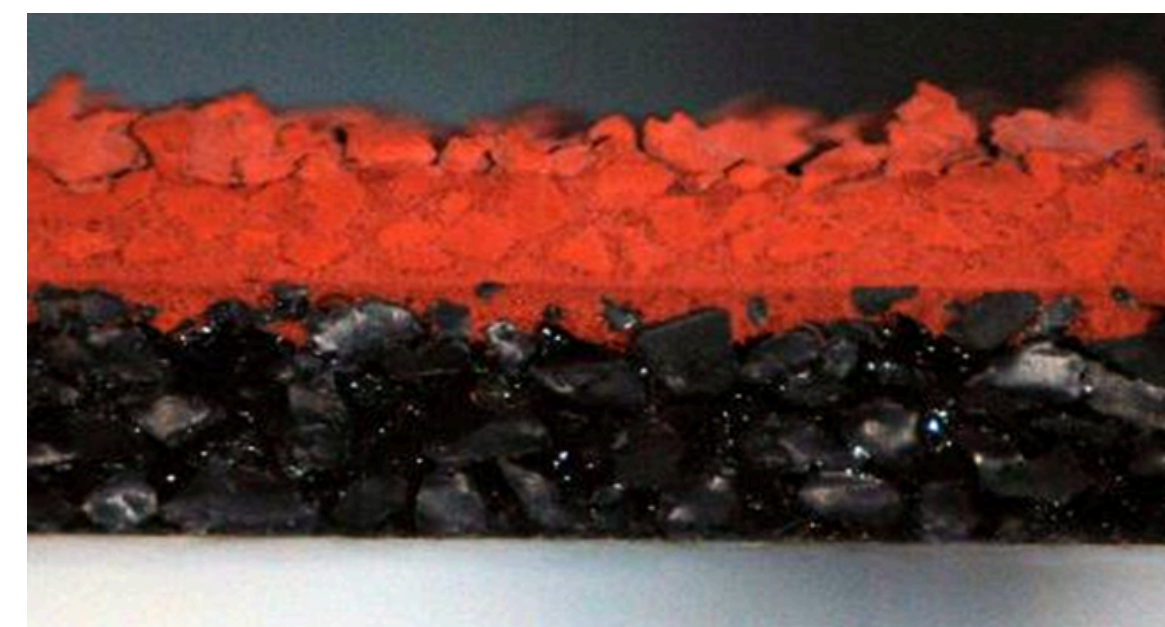
**System Overview:** A triple-layer in-situ system combining elasticity, strength, and top-layer resilience — ideal for training and semi-professional stadiums.

## Layer Composition

*Base Elastic Layer:* In-situ paving of Ecolastic SBR granules bonded with PU binder. This ensures shock absorption and long-term durability.

*Sealing Layer:* Applied over the base to create a non-porous foundation and enhance adhesion with the top coat.

*Top Structural Layer:* EPDM rubber granules broadcasted onto the top PU coating which forms the final wear layer, offering excellent grip and weather resistance.



## Key Features:

- High shock absorption and force reduction
- Longer lifespan: 10–12 years
- Strong surface finish for competitive-level performance
- Fully compliant with IAAF marking and thickness standards



# Sandwich PU System

## APPLICATION OF SEALING LAYER





# 3 Full PU System

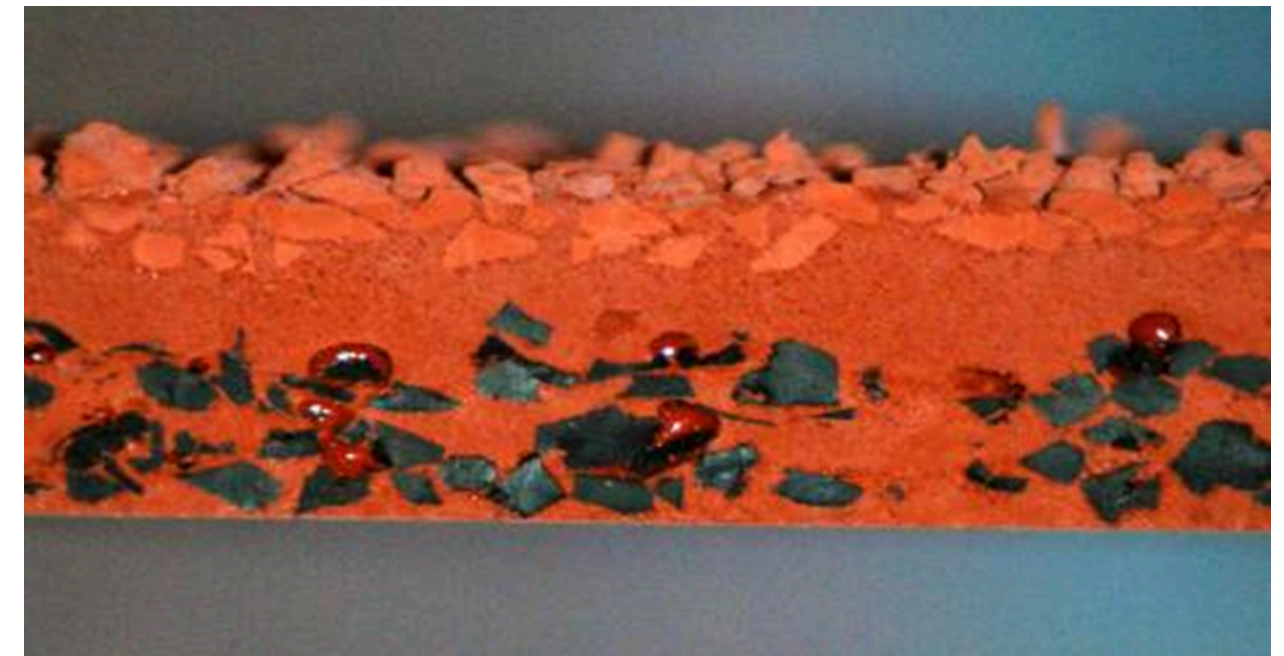
SUNFLEXINDIA.NET

**System Overview:** A solid, multi-layer polyurethane system engineered for top-level athletics and certified Class 1 tracks.

## Layer Composition

*Base Elastic Layer: Multi-layer structure of SBR granules mixed or broadcasted into polyurethane coating, built up to deliver excellent elasticity.*

*Top Structural Layer: EPDM rubber granules broadcasted onto a polyurethane wear layer — designed for maximum grip, wear resistance, and weather durability.*



## Key Features:

- Designed for international competitions
- Lifespan of 12–15 years with high wear resistance
- Outstanding force reduction and vertical deformation control
- Ideal for stadiums and high-performance venues





# Sandwich PU System

## BROADCASTING TECHNIQUE





# 3 PU Emboss System

SUNFLEXINDIA.NET

**System Overview:** An advanced in-situ polyurethane system with a textured embossed finish that enhances visual appeal and safety.

## Layer Composition

*Base Elastic Layer:* In-situ paved layer of SBR granules bonded with PU binder — offering foundational elasticity.

*Top Structural Layer:* Polyurethane top coat applied with **PU Chip** embossed texture, providing high durability, grip, slip resistance, and customized finishes.

## Key Features:

- Enhanced slip resistance due to embossed texture
- Visually distinctive with customizable surface designs
- Mid-range cost with premium aesthetics
- Suitable for both indoor and outdoor tracks, including multi-use sports areas







# WARRANTY & QUALITY ASSURANCE

All our systems are backed by Sunflex manufacturer's warranty ranging from 2 to 15 years, ensuring quality, durability, and peace of mind. This covers,

- Color stability
- Performance degradation
- Component failure or depolymerization
- SMART Track Technology





**Base construction**



**Compaction and Surface Leveling**



**Asphalt /Concrete  
Finished Surface**



**Surface System Installation**



**Line Marking**



**Installed & Game-Ready Surface**

# FROM FOUNDATION TO FINISH SMART TRACKS

Sunflex Handles It All.



# PROVEN EXPERTISE. ASSURED PERFORMANCE.



- ✓ All systems tested and certified to World Athletics (IAAF) standards
- ✓ Expert installation teams with strict quality control
- ✓ Wide range of systems tailored for schools, stadiums, and elite competitions
- ✓ Strong track record across India in sports infrastructure
- ✓ Backed by an impressive period of warranty and dependable after-sales support
- ✓ Trusted by institutions that demand performance, durability, and compliance





SUNFLEXINDIA.NET

# THANK YOU FOR YOUR TIME!

Every great game starts from the ground up.  
Let's build yours right.

## GET IN TOUCH

### Corporate Office:

Sunflex Sports Infrastructure Pvt. Ltd  
B-605/606, City Mall (Mayuresh Trade Center), Sector-  
19,Vashi,NaviMumbai- 400703,India.

Tel :+91-22-41315108

Mob: +91 98198 12403/ +91 91675 83529

**Delhi Office:** Mr. Umesh Kumar Gupta

Mob: +91 97170 32349 / 7838455337

**Email:** [infosunflex@sunflexindia.net](mailto:infosunflex@sunflexindia.net)

**Website:** [sunflexindia.net](http://sunflexindia.net)



Scan the QR code to get your  
**Sunflex Company Profile**